

Edinburgh Swift Survey 2005-2006



Final Report

Report on Edinburgh Swift Survey 2005-2006

Introduction

This report, and the whole survey, should be considered in relation to both the Edinburgh Biodiversity Action Plan (2005) and the first ever survey of swifts in Edinburgh, organised by Ian J. Andrews. The paper "Common swifts breeding in Edinburgh, 1999-2000" by Ian J. Andrews gives an excellent account of the survey and a valuable history of the Swift in Edinburgh.

Swifts were selected as a target species for the first Edinburgh Biodiversity Action Plan due to an estimated 62% decline in Scotland in BBS recording plots. The second Edinburgh Biodiversity Action Plan, 2005, puts more emphasis on habitats to ensure protection of target species.

It should be noted that the two surveys each had a slightly different focus and methodology. The first survey was citywide and recorded all swifts seen. The second survey concentrated on tenement areas and records of definite and probable nest sites in order to maximise observer effort, and to facilitate and inform conservation effort.

Methodology

The earlier survey asked observers to record

1. the total number of birds in an area
2. the number of birds in low screaming parties close to buildings
3. the number of sites where birds were seen entering nests.

The later survey asked observers to

1. ignore birds flying high or ranging widely. For example records of parties of birds feeding over the Water of Leith or the Meadows were not retained.
2. record the number of birds flying low over rooftops, and
 - a) dipping down towards a part of the roof/guttering
 - b) if already at that height, veering in close towards the wall.

If such behaviour was recorded more than once at the same spot, it was recorded as a probable nest site.

3. Where swifts were seen entering a crevice, or clinging to the wall beside such, it was recorded as a definite nest site.

The 2005/06 survey covered a smaller area, but attempted to be more systematic, in order to avoid bias dependent on where observers lived, and to clarify which areas were/were not surveyed.

The total survey area was divided into 13 map areas, then sub-divided into 38 small areas which were deemed realistic for one observer to cover. In the event, some areas had 2 people looking for swifts, whilst others had none.

A list of the survey areas can be found in Appendix 1.

Coverage

A minimum of two visits was recommended; most observers managed this, although a few made a huge investment of time with significant rewards. Inevitably the quality of coverage varied, with a few individuals returning many nest sites, where others were not so rewarded.

Some individuals ingeniously augmented their own sightings with information from a network of residents, who were able to provide details of nest sites from the rear of tenements with no public access.

Several records of nest sites were supplied that did not relate to tenements, and/or were outside the survey area. These were accepted. A very small number of records were found to refer to House Martins and were rejected.

The aim of the 2005/06 survey was to cover 60% of the areas in year one, and 95% of areas by the end of the survey. The first year target was met, with 24/38 areas (63%) covered, but the second year proved more difficult. By the end of the survey, 32 out of 38 areas (84%) were systematically surveyed, although some records were received from the areas not covered.

Areas not systematically covered during the survey were as follows:

4.3 Dean/Melville

7.1 Abbeyhill

10.2 Dalry

11.1 Tolcross *

11.4 South Side *

11.5 St.Leonards *

* At least one record was received from these areas.

Results

By the end of the survey, 70 definite and 61 probable nest sites had been identified. Given the slight shortfall in coverage, and the difficulties involved in such a survey, an element of under recording can safely be assumed.

It would probably be reasonable to make an estimate of between 120 and 150 pairs of swifts in Edinburgh during the summer of 2006, although that estimate must be taken as no more than a rough indication.

Types of nest sites are varied. The predominant 'model' site appears to be in a crevice under the roof guttering in old stone tenements, but churches, modern flats, and even under a window lintel are alternatives. To quote John Wilson: "In stone tenements, the most characteristic site is a nesting ledge behind the roof gutter. How swifts find this or any other nest site is a mystery"... "The Concern for Swifts website is a source of illustration of the range of nesting locations".

One observer specifically made the connection between a lack of swifts in her area, and the tenements being in good repair. Another observer noted feeling awkward about looking up at flats through binoculars. Using binoculars at close quarters to people's windows is not recommended!

Distribution

The most significant concentrations of swifts appear to be in areas 9, 10, and 11, to the south and the west of the city centre. In particular, the following areas:

9.3 Slateford

9.4 Dundee Street

10.1 Roseburn

10.4 Viewforth

11.3 Sciennes

11.4 South Side

Morningside (12.1/12.2), Broughton (6.1) and Hillside (6.2) also hold reasonable numbers. Of the areas not surveyed, there is reason to think that the Meadowbank area (7.2) holds swifts.

Even within the 'good' swift areas, it is a matter of great concern that birds are concentrated in very few sites. The repair of just a few tenements could lead to the demise of swifts in that part of the city, and Edinburgh's swift population remains very vulnerable.

A detailed table of results can be found in Appendix 2.

Opportunities and threats

The City of Edinburgh Council Bio-diversity unit (1 post), has done and is doing great work promoting the need to build swift bricks into the planning process at an early stage. They have been ably assisted by the tireless letter writing of John Wilson, who has been scanning the planning section of the 'Evening News' (Fridays) for a long time. Anyone wishing to see swifts continue nesting in Edinburgh could do worse than follow John's lead and respond to any of the planning applications in Friday's Evening News. A sample letter is attached in Appendix 3.

Although the provision of swift bricks is a guideline and not mandatory, the inclusion in planning guidelines could provide a supply of suitable sites over time.

In the medium term, restoration of tenements poses a serious threat, which manifests itself in two forms.

Firstly, the Building Standards Agency, Scottish Executive, ensures that restored tenements cannot get a building warrant unless they are wind and watertight, ie. NO crevices left under roofs for swifts. This is a major obstacle applying to all renovations.

Secondly, Historic Scotland are not presently inclined to agree to swift bricks being used in certain listed buildings, presently including tenements in key areas such as Edinburgh's New Town. Interestingly, there are swift bricks in Culzean Castle!

Attempts are being made to 'campaign' on both these fronts.

Caveats

Data quality was sometimes an issue. Where "back of X Street", I have taken a postcode in the middle of the street. The decision was made to accept the slight limiting of precision, in order to ensure recording of a definite or probable nest site for conservation purposes.

Where I was given a very specific address (eg 102 Raeburn Place, as opposed to 10-20 Raeburn Place) I have assumed a nest site, when it has not been possible to clarify the information.

On a few occasions different observers have produced possible overlaps in information. This writer has had to exercise judgement on these occasions, although information from 1999 – 2004 has sometimes assisted in this task.

Ongoing tasks and questions

Give info to LWIC (Bob Saville)

Need index of streets for each map, and pref. for each area.

Produce maps showing definite & probable nest sites, 2005/06.

CEC Biodiversity Unit (Sue Steel)

How to record where swift bricks going in?

Try to organise meeting with RSPB, SNH & Historic Scotland to overcome resistance to swift bricks in some historic buildings.

What to do about sites (from 1999, 2000 & 2004) which weren't picked up during 2005/06 survey? Can't automatically assume still there, but some may be.

And last, but by no means least

The survey was only possible thanks to many people giving freely of their time, my sincere thanks are due to all of them.

A list of those assisting with the survey can be found in Appendix 4.

A. G. Sandeman

10 August 2007

Appendix 1 Summary of areas/results

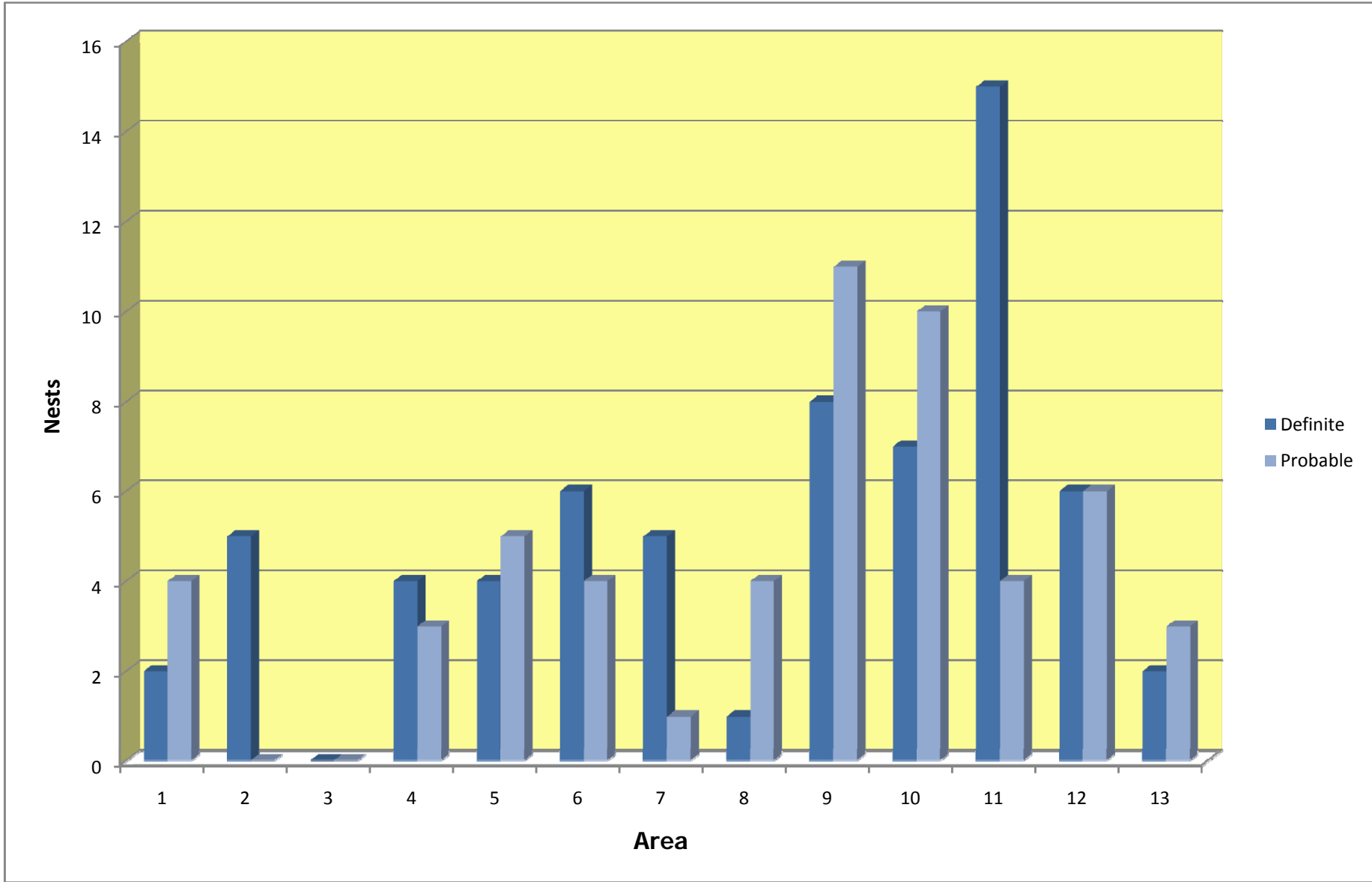
Appendix 2 Table of sightings

Appendix 3 Sample letter responding to planning application

Appendix 4 List of volunteers/contributors to the project

Appendix 1: Summary of areas/results

Area	Definite Sites	Probable Sites	Possible Sites
Goldenacre, Bonnington, N.Leith	2	4	6
S.Leith, Lorne, Pilrig	5	0	5
Craigeith, Blackhall	0	0	0
Comely Bank, Belford, Dean, West End, New Town	4	3	7
Stockbridge, Bellvue	4	5	9
Broughton, Hillside	6	4	10
Abbeyhill, Meadowbank South	5	1	6
Portobello, Joppa	1	4	5
Slateford, Dundee St, Merchiston	8	11	19
Roseburn, Dalry, Grove St, Viewforth	7	10	17
Tollcross, Marchmont, Sciennes, S. Side, St. Leonards	15	4	19
Morningside	6	6	12
Blackford, Newington, Prestonfield	2	3	5
Totals	65	55	120
Outside survey area	4	4	8
Total reported	69	59	128



Appendix 2: Table of sightings

Area	Postcode	Date	Area	Observer	Total	Screaming	Nest sites	Comment	Buildings	Definite	Probable
6.2	EH7 5HY	16 Jul 2005	46-49 Brunswick St.	JT	3		3	Rear of tenements north of Montgomery St & west of Brunswick St.	Tenements	3	
-	EH1 2LP	2 Jul 2006	15 N.Bank St.	AGS	6		1+	Low passes behind building; no access to rear.	High stone building		1
4.5	EH1 6N?	12 Jun 2005	Between Dublin St, Abercromby Pl, & Nelson St.	JT	4+		?	Active here 12/6 & 16/8	Tenements		
12.1	EH10 4PZ	10 Jun 2005	Springvalley Terrace	KC	2			Swifts present low overhead	Tenements		
12.1	EH10 5HU	10 Jun 2005	Maxwell Street	KC	2			Swifts present low overhead	Tenements		
10.4	EH10 4EZ	Mid-Late July	10 Bruntsfield Crescent	via CP	2 ?		1 ?	No info.	Tenements		1
10.4	EH10 4JD	11 Jul 2006	1-5 Viewforth	SES	2		1?	Low passes just above & below roof height	Tenements		1
10.4	EH10 4JL	6 Jul 2006	54-64 Leamington Terrace	ES, HP	2		1	2 Birds seen entering from a distance	Terraced houses	1	
10.4	EH10 4JL	8 Jun 2006	58 Leamington Terrace	TD	5		1	Flying close to crevice	Tenements		
10.4	EH10 4LP	26 Jul 2005	Boroughmuir School/Viewforth Sq.	TD	22	22		Screaming & soaring			
10.4	EH10 4LY	Jun/July 06	Montpelier	HP	8		?	Regular presence	Tenements		1
10.4	EH10 4NH	17 Jul 2006	Montpelier Park	HP	10		?	Skimming roofs	Tenements		1
12.1	EH10 4QY	14 Jun 2005	40-44 Jordan Lane, n.side	HD	3		1?	Passing close to the eaves, rear	Tenements		1
12.1	EH10 5HJ	Jun-Jul	Millar Place, most of	HD	8		1?	Up to 8 flying close over & around	Tenements		1
12.2	EH10 5JF	30 May 2005	Balcarres St.	TL	10	5 prs			?		1
12.2	EH10 5NE	3 May 2005	19 or 21 Dalhousie Terrace	TL	2		1	rear	?	1	
12.2	EH10 5PA	Jun-Jul	12 Craiglea Drive	HD	1		1	Entering nesting hole, rear	Tenements	1	
12.2	EH10 5PF	10 Jul 2005	42 Craiglea Drive	HD	1		1	Entering nesting hole, FRONT	2 storey stone terraced house	1	
12.2	EH10 5QH	Jun-Jul	5 Comiston Gardens	HD	1		1	Entering nesting hole, rear	Tenements	1	
12.2	EH10 5QH	June	3 Comiston Gardens	HD	1		1	Entering nesting hole, rear	Tenements	1	
12.2	EH10 5QL	2 Jul 2006	100-112 Comiston Road	ES	2		1	2 Birds seen entering from a distance	Tenements	1	

Area	Postcode	Date	Area	Observer	Total	Screaming	Nest sites	Comment	Buildings	Definite	Probable
12.2	EH10 5QR	5 Jul 2005	38 Comiston Drive	HD	1		1	Entering nesting hole, FRONT	2 storey stone terraced house	1	
9.4	EH11 1HU	10 Jul 2005	Temple Park Crescent	KC	4		3 ?	Swifts flying up to guttering, looking west from bridge at Yeaman Pl.	Tenements	3	
9.4	EH11 1??	8 Aug 2005	Fountainhall Brewery/Dundee St.	TD	34			Soaring & feeding	Mixed		
9.3	EH11 1SG	2 Jul 2005	Harrison Gardens	TW	2		?	Overhead on 27/6 and 2/7	Tenements		
9.4	EH11 1??	27 Jun 2005	Temple Park Crescent/Watson Cres.	TW	6		?	Seen by other observer, also	Tenements		
9.4	EH11 1??	27 Jun 2005	Bryson Road	TW	2		?	Overhead	Tenements		
9.4	EH11 1??	27 Jun 2005	Polwarth Gardens	TW	2		?	Overhead	Tenements		
9.4	EH11 1AT	Jun/July 06	Gibson Terrace	TW	2		?	Active here 2005	Tenements		1
9.4	EH11 1BT	Jun/July 06	Yeaman Place	TW	2		?		Tenements		1
9.4	EH11 1BT	Jun-Jul	21 Yeaman Place	MP	2		1	reported to MP	Tenements, at rear	1	
9.4	EH11 1EA	Jun/July 06	Tay Street	TW	2		?		Tenements		
9.4	EH11 1EU	Jun/July 06	Watson Crescent	TW	7		?		Tenements		1
9.4	EH11 1HN	Jun/July 06	Polwarth Crescent	TW	2		?		Tenements		
9.4	EH11 1HX	Jun/July 06	Temple Park Crescent	TW	4		?		Tenements		
9.4	EH11 1LL	Jun-Jul	56 Polwarth Cres.	MP	2		1	reported to MP	Tenements	1	
9.3	EH11 1NR	28 Jun 2006	5 & 8 Ogilvie Terrace	CB	4		2	Since 1983. Under gutter at rear, c7m apart.	Tenements, 1890s	2	
9.3	EH11 1QH	Jun/July 06	Shandon Street	TW	1				?		
9.3	EH11 1RY	8 Jul 2006	46 Ashley Terrace	CB	2		1	Under gutter at rear.	Tenements, 1890s	1	
9.3	EH11 1SG	Jun/July 06	Harrison Gardens	TW	7	5	1 ?		Tenements		1
10.3	EH11 2AH	17 Jul 2006	Caledonian Crescent	TD	16	16	?	screaming	Tenements		2
9.3	EH11 2JT	Jun/July 06	Angle Park Terrace	TW	7		1 ?		Tenements		
9.3	EH11 2JX	8 Jul 2006	9-14 Angle Park Terrace	CB	4		1 ?	Low passes behind building; no access to rear.	Tenements, 1890s		1

Area	Postcode	Date	Area	Observer	Total	Screaming	Nest sites	Comment	Buildings	Definite	Probable
9.3	EH11 2JY	Jun/July 06	Henderson Terrace	TW	3		1 ?		Tenements		1
4.4	EH12 5AF	29 Jul 2006	13 Palmerston Place	SH	5		1 ?	Low passes	Tenements		1
10.1	EH12 5NX	29 Jun 2005	Roseburn Street	JP	7		1+?	Rear of tenements, probable nest site(s).	Tenements		1
10.1	EH12 5NX	3 Aug 2005	Roseburn Street	AGS	4		?	Close to roof level, esp back of tenements	Tenements		
-	EH12 7TR	Jun-Jul	Manse St	TW	6+		3	All gable end	1930s flats	3	
-	EH13 0JT	3 Aug 2005	Spylaw Street	JR	12		1+ ?	there for 20 years	?	2	
-	EH13 9	19 Jun 2005	Oxgangs Avenue	JW	5		?	Close to roof level; also seen in 2004	Tenements		1
9.1	EH14 1NU	30 May 2005	Moat St/ Moat Drive	JW	10		1+?	Probable nest site(s). Present throughout the season.	Tenements		
9.1	EH14 1NU	19 Jun 2005	Moat Drive/ Hutchison Rd.	JW	10	Yes	1+?	15 & 17 Moat Drive most likely to have nest sites, maybe 16 opposite.	Tenements		2
-	EH14 2BZ	12 May 2005	76 Longstone St	DL	7	7	1 +	s. end of flats, several years.	Modern flats - hole under roof.	1	
-	EH14 2DR	10 May 2006	30 Redhall Gardens	TOC	2		1	Nested for some years	Flats	1	
-	EH14 5BX	9 May 2005	7/9/11 and/or 13/15/17 Woodhall Drive	DSH	5	5	1+ ?	There since 1995 when we moved to the district	2 storey 4 apt council houses built 1930s	1	
-	EH14 5BX	4 Aug 2005	7/9/11 and/or 13/15/17 Woodhall Drive	DSH	10	10	1+ ?	Peak of activity , numbers fell rapidly no birds seen after 10/8	2 storey 4 apt council houses built 1930s		
-	EH14 5PY	7 May 2005	1/2 Easter Currie Court	DSH		7	3	There since 1995 when we moved to the district	Original Easter Currie farmhouse, 2 story building converted 1970 to two dwelling houses		
-	EH14 5PY	1 Aug 2005	1/2 Easter Currie Court	DSH	12+	12+	3	Peak of activity , numbers fell rapidly with last birds seen 12/08		3	

Area	Postcode	Date	Area	Observer	Total	Screaming	Nest sites	Comment	Buildings	Definite	Probable
8.1	EH15 1DY	7 Jul 2005	Kings Road	TTP	1			Flying low with food.	Tenements		
8.1	EH15 1JD	1 Jul 2006	4-6 Ramsay Place	GS	4		1+	Low passes	?		1
8.1	EH15 2BG	11 Jul 2005	Marlborough St.	TTP	12+		1+?	Seen every visit, flying low past roofs	Tenements		2
8.2	EH15 2HB	Jun-Jul	107 Joppa Road	AR	2+		1+	There for years, prob. also nearby houses.	Stone terrace, 3 storey	1	1
8.2	EH15 2NB	5 Jul 2005	Morton St south	TTP	2			Seen twice over street.	Tenements		
13.3	EH16 5BY	10 May 2006	171 Dalkeith Road	WT	1		1	Entered crevice by rhone to rear	Tenements	1	
13.3	EH16 5DR	June-July	Kilmaurs Terrace	WT				for many years			
13.3	EH16 5DS	June-July	175-177 Dalkeith Road	WT					Tenements		
13.3	EH16 5DX	11 May 2006	158 Dalkeith Road	WT	1		1	Entered crevice to rear	Tenements	1	
13.3	EH16 5DX	June-July	156 Dalkeith Road	WT			1		Tenements	1	
13.3	EH16 5DX	June-July	162-172 Dalkeith Road	WT			1 ?		Tenements		1
13.3	EH16 5HL	12 May 2006	14 Marchhall Crescent	WT	4		1 ?	Low passes	Hotel		1
13.3	EH16 5HQ	June-July	145 Dalkeith Road	WT					Tenements		
13.3	EH16 5JT	June-July	261-289 Dalkeith Road	WT	2				Tenements		
10.4	EH16 6NX	16 Jun 2005	Leamington Terrace	TD	27			Hawking	Tenements		
10.4	EH16 6NX	9 Jul 2005	50-52 Leamington Terrace	TD	2		1?	Interested (in flight) in crevice, eaves. East facing	Tenements		1
10.4	EH16 6NX	10 Jul 2005	58 Leamington Terrace	TD	1		1	Entering crevice in eaves	Tenements		1
5.1	EH3 5BW	Jun-Jul	Saxe-Coburg Place	SH	4		1?	Regular low presence	Tenements		1
5.1	EH3 5JZ	Jun-Jul	14/16 Howard Place	HD	3		1?	Passing close to the eaves, rear	Tenements		1
5.1	EH3 6??	Mid-Late July	Royal Circus	via CP	?		?	No info.	Tenements		
5.1	EH3 6BX	Jun-Jul	Moray Place	SH	4+		?	Regular low presence	Tenements		1
6.1	EH3 6NA	7 Jun 2005	16-20 London St	AGS	4	4	1?	repeated low passes; probable nest site	Tenements		1
4.5	EH3 6NN	23 Jun 2005	34-40 Dublin St	AGS	4	4	1?	repeated low passes; probable nest site	Tenements		1

Area	Postcode	Date	Area	Observer	Total	Screaming	Nest sites	Comment	Buildings	Definite	Probable
4.5	EH3 6PL	26 Jul 2006	19 Drummond Place	SH	5		1 ?	Low passes	Tenements		1
4.5	EH3 6PT	16 Jul 2005	West Scotland St. Lane	JT	2		2	Rear of tenements, W.Scotland St.Lane	Tenements	2	
11.1	EH3 9EZ	20th Jun 2006	32 Lauriston place	AW	4	4	?	flying low over rooftops	4 storey tenements		1
11.1	EH3 9JZ	19 May 2006	Tollcross	AW	6	6	1		Tenements	1	
11.1	EH3 9JZ	4 May to 14 August 2006 (last sighting)	21 Drumdryan street	AW	5	5	1-2	been there since 2000, swifts flying into several crevices. Maybe several nest sites? Suspected nest site(s) under roof gutter, above 4th floor.	1900s tenement	2	
10.4	EH3 9NL	05/07/2006	Bonaly primary school, Upper Gilmore Place	AW	6+	6+	1 ?	suspected them to nest at the school, but no positive id	old school building		1
10.4	EH3 9PF	27 Jun 2006	86-88 Gilmore Place	ES	6	6	1?	Low passes behind building; no access to rear.	2 storey houses		1
4.1	EH4 1HH	Mid-Late July	102 Raeburn Place	via CP	2 ?		1 ?	No info.	Tenements		1
2.2	EH6 5DD	Mid-Late July	Arthur Street	via CP	2 ?		1 ?	No info.	Tenement behind Wilkinson warehouse		1
4.1	EH4 1HN	Jun/July 06	Raeburn Place, Stockbridge, Nos 18-24	MB	4		2	Ar rear, c.5 m apart. Access into roof under gutter	Tenements, 1820s	2	
4.1	EH4 1HY	Mid-Late July	4 Raeburn Street	via CP	2 ?		1 ?	No info.	Tenements		
4.1	EH4 1JH	11 Jul 2005	7-12 Mary's Place	MAV	2		1	gutter at rear of tenement, facing Bedford St.	Tenements	1	
4.1	EH4 1LL	25 Jun 2005	43 Dean St	MB	4		2	under gutter to rear	Tenements	2	
4.1	EH4 1LW	Mid-Late July	Dean Street	via CP	2 ?		2	At rear.	Tenements		
4.1	EH4 1PQ	24 Jul 2006	4-8 Learmonth Terrace	SH	4		1 ?	Low passes	Tenements		1
-	EH5 2NJ	13 Jul 2006	Crewe Road Gardens	AB	12	12	1+?	Nesting in roof space near drain pipes	?		2
1.1	EH6 ???	28 Jun 2005	?? Newhaven Road	AGS	14	14	1+?	probable nest sites in old sandstone tenement at top of Whale Brae	Tenements & old stone houses		1

Area	Postcode	Date	Area	Observer	Total	Screaming	Nest sites	Comment	Buildings	Definite	Probable
1.2	EH6 4BJ	Jun/July 06	10-16 Gosford Place	AGS	6	6	2	2 definite nests under guttering at rear.	Tenements	2	
1.2	EH6 4BJ	26 Jun 2005	10-12 Gosford Place	AGS	4	4	1	by rhone, under gutter to rear	Tenements		
1.2	EH6 4DB	Mid-Late July	66 Pitt Street	via CP	8		2 ?	Seen near rhones	Tenements		2
1.1	EH6 4LD	9 Jun 2006	42 Park Road	MF	2		1	Rear of house, crevice	Stone House	1	
2.2	EH6 5BU	4 Jul 2005	302-308 Leith Walk	AGS	12		?	Close to roof level, esp back of tenements	Tenements		1
1.3	EH6 6	27 Jun 2005	Commercial Street	JW	5		1+?	Probable nest site(s). Present throughout the season.	Converted warehouses		2
2.1	EH6 8AH	31 Jul 2005	Cochrane Place	PH	3+		1	Young calling from nest	Tenements	1	
2.2	EH6 8JR	12 Jun 2005	342 Easter Road	JT	1		1		Tenements	1	
2.2	EH7 5LN	14 Jun 2006	43-49 Albert St.	HM	8		4	Under gutter at rear	Tenements	4	
5.2	EH7 4??	26 May 2005	East Claremont Street (south side of)	JB	6	6	3	3 prs flying up to eaves at back of Nos. 58-62	Tenements	3	
5.2	EH7 4BU	May-August 2006	7 Melgund Terrace	AGS	4	0	1	Under gutter beside Rhone, at front	Tenements	1	
5.2	EH7 4BU	28 May 2005	7 Melgund Terrace	AGS	3	0	1	more swifts behind E.Claremont St.	Tenements		
5.2	EH7 4BZ	31 May 2005	2-4 Bellevue Place	JB	2	2	1	1 pr flying up to eaves at back of Nos. 2-4	Tenements	1	
5.2	EH7 4DT	1 Jun 2005	10-11 Bellevue Terrace	JB	4	4	2	4 birds entering eaves at back of Nos 10 & 11	Tenements	2	
5.2	EH7 4JP	1 Jun 2005	22-24 East Claremont Street	JB	4	4	1	at least 1 entering eaves at back of Nos 22-24; 3 or 4 flying around	Tenements	1	
6.1	EH7 4NL	8 Jun 2006	138-140 McDonald Road	AGS	4	6?	1+	Def.1, prob 2 under gutter at rear.	Tenements	1	1
6.1	EH7 4NL	21 Jun 2005	144-146 McDonald Road	AGS	2	2		possible nest site	Tenements		1
6.1	EH7 4P?	12 Jun 2005	between Dryden St & Spey Terrace	JT	4+		?	Active here 12/6 & 16/7	Tenements		1
6.2	EH7 5JX	19 Jul 2005	41 Montgomery St.	JT	1		1		Tenements	1	
6.2	EH7 5NW	23 Jul 2005	15 Elgin Terrace	JT	1		1		Tenements	1	
6.2	EH7 5QJ	16 Jul 2005	27 Albion Road	JT	1		1		Tenements	1	
6.2	EH7 5YJ	Mid-Late July	Allanfield	via CP	4		2	Colony for 14 years	Tenements	2	

Area	Postcode	Date	Area	Observer	Total	Screaming	Nest sites	Comment	Buildings	Definite	Probable
7.2	EH8 7ES	10 Jul 2006	Piershill Terrace, Portobello Rd.	CP	6	6	1	1 probable nest site at rear of Piershill Terr. Portobello Rd.	Tenements		1
7.2	EH8 7ES	15 Jul 2006	Piershill Terrace, Portobello Rd	CP	8	6	1	1 probable nest site at rear of Piershill Terr. Portobello Rd.	Tenements		
7.2	EH8 7HD	May/June/ July 2006	Kenmure Ave/Willowbrae Rd/Piershill	CP	6 to 8	6+		3 pairs seen daily in good conditions, screaming over rooftops in evening	1900s tenements and stone terraces		2
7.2	EH8 7HD	Mid-late July	7.2 Meadowbank South	CP	22	15		Large numbers seen daily in evenings, assume once chicks fledged and flying with adults	Mix tenements/terrace		
11.4	EH8 9JB	June/July 2006	52-58 Clerk Street	WD	4	2-4	1	Low passes behind building; no access to rear.	Tenements		1
11.4	EH8 9LN	Mid-late July	19-20 Buccleuch Place	FMK	2		1	Under gutter	Univ. building	1	
11.4	EH8 9LW	Mid-late July	7 Buccleuch Place	FMK	2		1	No info	Univ. building	1	
11.4	EH8 9NL	7 Jul 2005	Boroughloch	AM	2+				Old stone houses		1
11.4	EH8 9NQ	2 Jun 2006	130 Buccleuch street	AW	2	2	0	flying low over rooftops	4 storey tenements		
11.5	EH8 9QU	Jun-Jul	10 Montague St.	MP	2		1	reported to MP	Tenements	1	
7.1	EH9	16 Jul 2006	7.1 Abbeyhill	CP	0	0	0	None seen - survey needed again next year, as no repeat visit undertaken			
11.2	EH9 1DG	Mid-late July	Spottiswoode Street	via CP	?		?	No info	Tenements		
11.2	EH9 1EG	9 Jul 2005	Warrender Park Terrace	MP	6		?	Seen regularly over W.P. Terr/Rd, Spottiswoode St & Marchmont Crescent	Tenements		
11.3	EH9 1NX?	22 Jul 2005	Sciennes Road	HD	10		1+?	Passing close to the eaves	Sciennes Primary school		1
11.3	EH9 1PE	22 Jul 2005	16 Livingstone Place	HD	3		1?	Passing close to the eaves, rear	Tenements		1
13.1	EH9 3??	10 Jul 2005	Blackford Avenue	JW	4			Feeding over area.	?		

TOTAL 70 61

Appendix 3: Sample letter responding to planning application

Alan Henderson,
Head of Planning & Strategy,
City Development Department,
Waverley Court, G3
4 East Market Street,
EH8 8BG

Flat 5,
The Old Brewery,
51 Stoneford Rd,
Edinburgh,
EH14 2AZ
15 January 2008

Dear Sir,

Application 08/05180/OUT

I refer to the application for permission in outline for 1,500 additional residential dwelling units at 1 West Shore Rd, EH15 1RH, advertised on 12th January.

Either now or at a later application stage, you should consider the relevance of including provision for swift nesting sites in a development of this magnitude. This would be in accordance with the CEC species action plan for swifts, 2004-09, and CEC biodiversity guidelines for developers, approved by the planning committee and CEC executive in 2006.

Also, areas of greenery in the development would add to existing greenery in the area and encourage swift presence.

While I make comment in this case, I hope and expect that you will consider provision for swifts in all new developments where practical.

Yours sincerely,

[SIGNATURE]

[NAME]

Appendix 4: List of volunteers/contributors to the project

Aitken, Laura
Andrews, Ian
Baily, Theodora
Ballantyne, John
Batty, Adam
Betts, Mike
Boyd, Ann
Brown, Christine
Buchanan, Josie
Burns, Paul
Campbell, Liz
Collinson, Martin
Cox, Kathryn
Crabb, Judy
Dott, Harry
Dougall, Tom
Duffy, Tim
Dunlop, Helen
Easson, Martin
Ellis, Julie
Farrell, Michael
Finnigan, Martin
Geremi, Francesco
Green, James
Griffiths, Peter
Hamilton, Andrew
Hannam, Mike
Hawkins, Lawrence
Holling, Mark
Hopwood, Grahame
Howie, Joan
Hunter, Stephen
Hyvonen, Pasi
Kaye, Maureen
Kneale, Fiona-Maree
Knights, Paul
Lawrie, Tom
Loughney, Des
Mackenzie, Ken
McLennan, Amanda
MacMillan, Andrew
Moss, Martin
O'Connor, Tony
Peacock, Caroline
Pettie, Helena
Porteous, Malcolm
Pringle, John
Reid, Elaine
Ryder, James
Sandeman, Andrew
Saville, Bob
Steele, Susan
Stephen, Stella
Sweeney, Eppie
Tait, Norma
Taylor, Jay
Taylor, Natalie
Thomas-Paine, Tessa
Thompson, Winifred
Viatte, Marie-Amelie
Watt, Tom
Webborn, Thomas
Wilcox, Joan
Wilhlem, Andreas
Wilson, John
Yeo, Elspeth
Youngs, Keith

Cover image by Angus Kneale.